



10 Dan Pienaar Drive, Tedderfield, Eikenhof 1872. Google Maps: Macs Party Venue.

Contact 011 6406096 or [admin@macsvenues.co.za](mailto:admin@macsvenues.co.za)



**Disco Party Venue Hire:** Evening (6.30pm to 10.30pm) **Fee: R 2,995-00**  
Fee includes 40 kids and 10 adults (total 50 guests), thereafter fee R25 per person

Any damages caused by your guests will be for your account  
Should you feel bouncers/security need to be arranged for the evening,  
Please let us know and we will quote you accordingly.



✓ **Optional Extra DJ Hire:**

- Please ask us for rates and information on DJ & Sound system hire

✓ **Optional Extra:**

- Hire of professional sound system (no DJ), just provide your own USB stick or Ipod – R 800-00

**Music must be switched off promptly at 10.30pm.**

**We allow you 20 minutes after party to vacate venue**

**EXTRA OVER TIME: Not available**

**To Make a Booking:**

- ☆ Please contact us to secure party date, time and fill in a booking form
- ☆ Venue will only be confirmed on receipt of signed booking form. Please call us to confirm that we have received your booking form.
- ☆ We require a **NON refundable deposit of R 2,000**. Deposit is payable within 5 days after we have received your booking form. Deposit will be deducted from final invoice

**Party Bash Hire Fee Includes:**

- ∞ 80m<sup>2</sup> Indoor hall
- ∞ Extra undercover roof area with side awnings (65m<sup>2</sup>)
- ∞ 90m<sup>2</sup> open air modern “afdak” area
- ∞ Disco Lights including UV blaster & strobe lights. **PLEASE ADVISE IF ANY GUESTS SUFFER FROM EPILEPSY**
- ∞ Tables & chairs
- ∞ 2 x fixed braai facilities, bonfire pit and picnic area
- ∞ Secure parking inside the venue with a guard at gate

**Viewing of venue & facilities:** Please book an appointment for venue viewing. We do not allow viewing unless an appointment has been made OR during other clients parties.

**VENUES ARE IN HIGH DEMAND. PLEASE BOOK EARLY TO AVOID DISAPPOINTMENT**

**PERFORMANCES / SHOWS & FUN EQUIPMENT HIRE - must be booked in advance – Quote on request:**

**Entertainers:** offer a variety of fun filled shows – Aerial Acts, Dancers, Fire eaters, Jugglers, Comedy Clown, Magicians, Circus Show, Face painters, Balloon Twister and lots more.

**Fun & Extreme Equipment for hire** –Bungy Bouncers, Trains, Carousels, Mechanical Bull, Water ponds, Parachute Rides etc.

**CATERING:**

You are allowed to supply all your own catering, cakes and drinks or ask us for our catering, cakes and drink options.

**TERMS & CONDITIONS OF HIRING MAC'S PARTY VENUE!**

**Extra Electricity:** Should you require extra electrical plugs for own catering extra fee of R95 per electric item will be applicable

**Children Supervision** Organizing Parent must take responsibility and supervise all children

**See detailed list of all items included and *not* included in Venue hire on page 5**

**Manager** Our Venue manager will meet & assist you with any unforeseen snags during your party.

☆ **Special Circus School, Farm outings, Corporate, Fun Day, Team building & Christmas packages on request**

### Enquiries & Confirmation

To make an enquiry or confirm booking please call our offices during office hours or send an email request

Office hours are Monday to Friday 9am to 4pm.

Booking Office is closed and phones are switched off on Saturday, Sundays & Public holidays.

Party Times: Open 7 days a week

Venue manager & security on site for all party bookings

ALL VENUES ARE EXCLUSIVE – NO SHARING. All Venues can be hired individually or as combos.

Ask us for prices & information on our other venues for hire:

\*\* Farm Venue – our oldest and most popular venue

\*\* Fountain Spray Venue hire – only available 1 January to 15 May or 20 August to 31 December

\*\* Teenage Party Bash – Teenagers dream party venue includes disco & laser lights

\*\* Brand New: Circus Parties in our delightful Big Top – Your child will be the star of the circus show

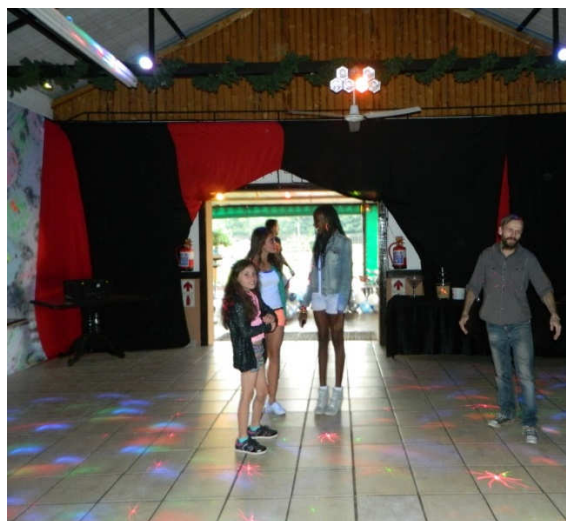
\*\* Tailor made Combo packages available: Fountain & Farm, Farm & Party Bash. Circus & Farm

**Contact details: Phone 011-640-6096 Office Cell: 082-491-2121**

Email: [admin@macsvenues.co.za](mailto:admin@macsvenues.co.za) Website: [www.macsvenues.co.za](http://www.macsvenues.co.za)



View and like Macs Party Venue



**DIRECTIONS:**

**Mac's Party Venues – Farmyard, Circus Adventures, Party Bash & Fountain Spray Fun**

**10 Dan Pienaar Drive, Tedderfield Estates, Eikenhof (20 km South of JHB CBD)**

**GPS: S 26° 20' 20.0" E 027° 58' 09.7**

**Google Maps: Macs Party Venue**

**FROM N3 / N12 HEADING TO KIMBERLY / PAST THE GLEN**

- N12 towards Kimberly.
- **Take Klipriver** off ramp at top turn left toward Vereeniging.
- **Go straight ±7 km**, till you see Mall of the South on right
- **Turn right** at traffic light by Mall of the South.

*Carry on following directions below.*

**Directions from Brackenhurst / Alberton**

- **Go straight** on Swartkoppies Road past Mall of The South. Go 8 km (name changes to Main Road) it is the R554. Go past Kibler Park on right & Waterstone College on left.
- **Turn left at T. Junction** marked R82 Vereeniging.

*Carry on following directions below*

**FROM M1 BLOEMFONTEIN HEADING**

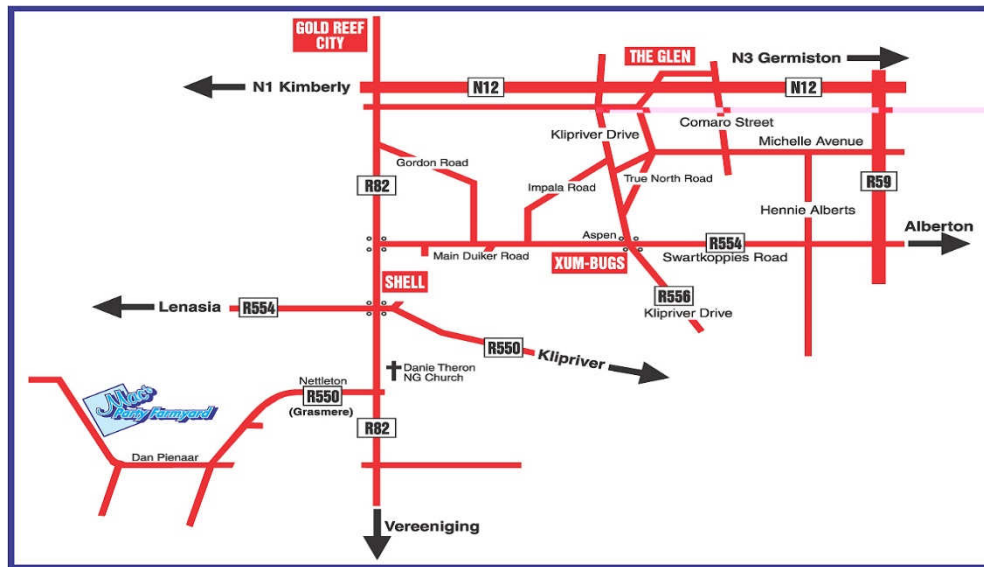
**SOUTH PAST GOLD REEF**

- M1 Bloemfontein, go past Booyens, Xavier Street, Gold Reef City Casino.
- After Casino see sign Bloemfontein N1, Vereeniging R82.
- Keep to middle lanes, highway splits keep right.
- See sign Southgate / Vereeniging R82, **keep straight** onto Vereeniging R82
- R82 becomes M27. We are 11 km from here
- Go downhill past Eagles Nest, over traffic light to Kibler Park.

*Carry on following directions below*

- **Go past** Lido hotel and Shell garage on left.
- **Straight over next traffic light** (Klipriver / Lenasia)

- Exactly 1.5km after traffic light, keep right see Church & sign to Tedderfield airport on left. **Turn right.**
- Go straight for **1 ½km only** , See yellow sign on right, at tar road -Mac's Party Venue sign - **TURN right.**
  - Venue ½ km from here on right.



## **VENUE ITEM LIST FOR PARTY BASH All items Included in venue hire fee**

### **Small Bar Fridge – cannot store Ice Cream Cakes**

1 x Kettle or Urn

1 x Microwave Oven

2 x Outdoor fixed Braai's

Patio heaters

2 x 1m tables inside venue

2 x plastic catering tables

30 x adult plastic chairs (extra chairs can be hired)

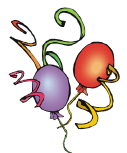
4 x (6 seater) outdoor wooden picnic tables and chairs

2 x plastic baths for drinks

20 x plastic cups

20 x Coffee Mugs

TV with DSTV programs



**Venue items - *NOT* provided- can be hired:** Linen, tablecloths, Cutleries & crockery for main meals.

Hot plates, Gas or electric stove, Serving dishes & glass bowls etc.